

Middle School Math

Mrs. Samson

2019-2020

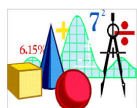
IXL

SmartScore
out of 100

36

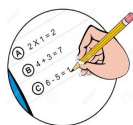
- You can expect to have IXL every week.
- You will find the IXL schedule on my blog. A hard copy is attached as well.
- You will be graded on your smart score located on the right hand side of the screen. I will take the average of your smart scores for the week, which will be entered into the grade book.
- Do it early and do it often. You must complete the skills this school year to get credit.
- If you are having trouble, I can only help you during the week. NOT after it is due. IXLs are assigned on Monday and due Sunday at midnight.
- If you forget to do your IXL that week, please do not ask for an extension or try to use an "oops" pass. If you are absent the entire week or part of the week, you are still responsible for your IXL.

Homework



- Homework is assigned nightly.
- Don't leave my classroom without the night's homework written in your planner.
- Homework is worth 15% of your grade.
- You grade the previous night's homework in class the next day.
- You will receive an accuracy score on your homework.
- Quiz and test reviews will be counted as a completion grade.

Tests and quizzes



- Test and quizzes make up the majority of your grade.
- You must review your notes and examples from class.
- Use the quiz and test reviews in the textbook to help you study.
- There is a quiz about every three lessons and a test about every 6.
- We do a day of review before every test and quiz. This is your opportunity to ask questions. Please come prepared. Please do not save your questions for the day of the test.

Class Expectations

- Be respectful to one another including the teacher.
- Work hard, do your very best and be proud of your work
- Keep yourself organized
- Come to class prepared to work.
- Bring your materials and your completed assignments.
- Take notes!!
- Communicate when you do not understand

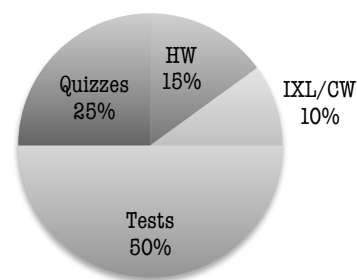
Absences

Students should initiate the make-up work process. They have two days per number of days absent to make up any missed work. Math moves quickly and each lesson builds on the previous lesson. It is easy to lose track. Missed tests must be rescheduled individually with teacher.



1. Red pen for grading homework.
2. Homework from the previous night.
3. Your notebook to take notes.

Grade



A n o t e f r o m
y o u r t e a c h e r

I am here to help you succeed and feel confident in and out of math class. Please contact me with any questions! Email is the best way to contact me: elizabeths@stthomasmore.org.